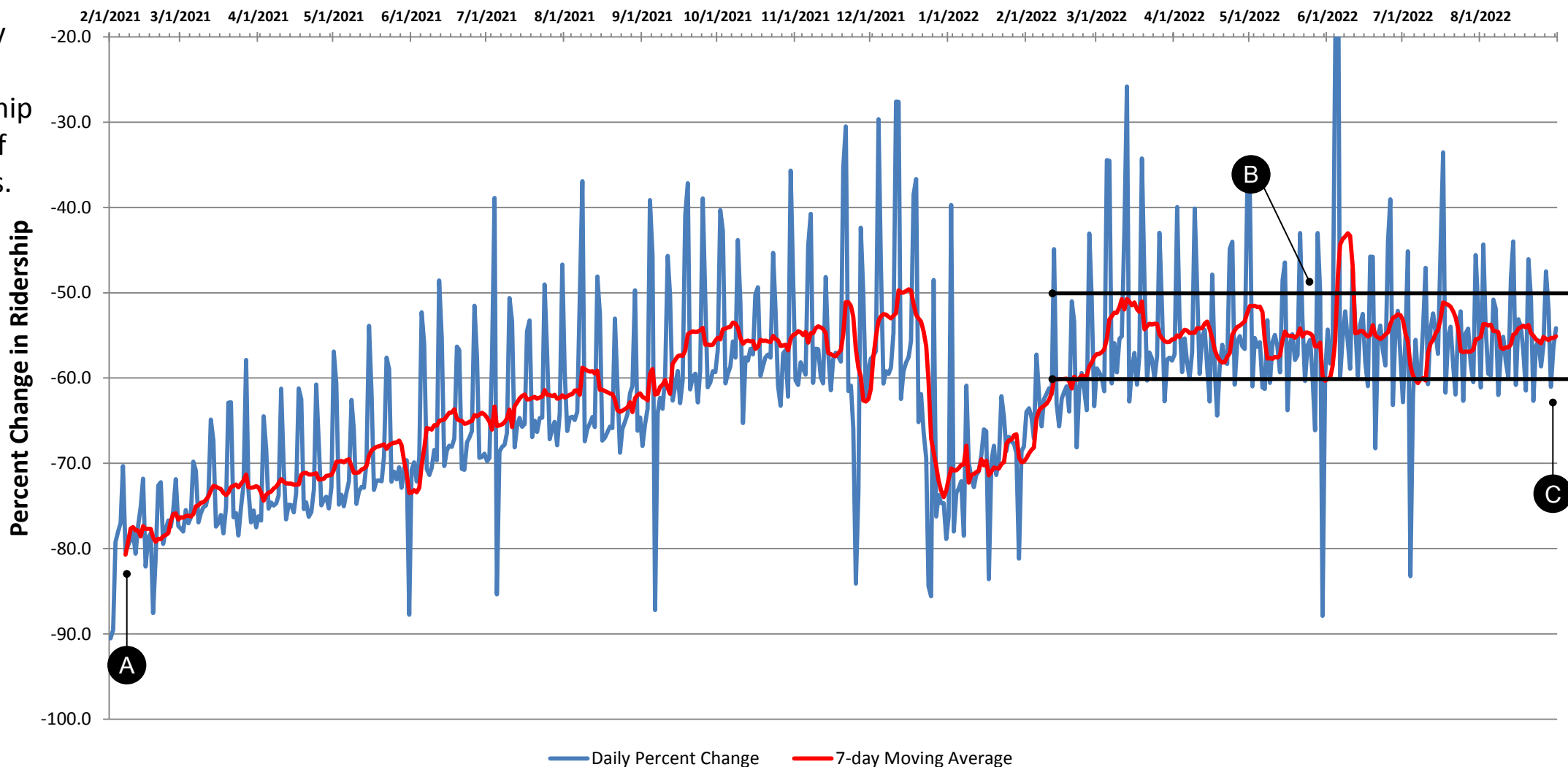


# PATCO Percent Change in Ridership from February 2021 through August 2022

## Percent Change in PATCO Ridership



**A** In early February 2021, percent change in ridership is about (80%) of pre-COVID levels.

**B** Since February 2022, percent change in ridership is mostly in the range from (50%) to (60%).

**C** In August 2022, percent change in ridership is about (55%) of pre-COVID conditions.

Note 1: Percent change compared to pre-pandemic average by day of week from January 1st to March 7th 2020, excluding holidays.

Note 2: The daily percent change (in blue) shows the peaks and valleys for weekend and weekday ridership, respectively.

Note 3: 2021 and 2022 holidays that may affect ridership include, President's Day, Good Friday, Memorial Day, Juneteenth, Independence Day, Labor Day, Indigenous Peoples' Day, Thanksgiving, and Christmas.