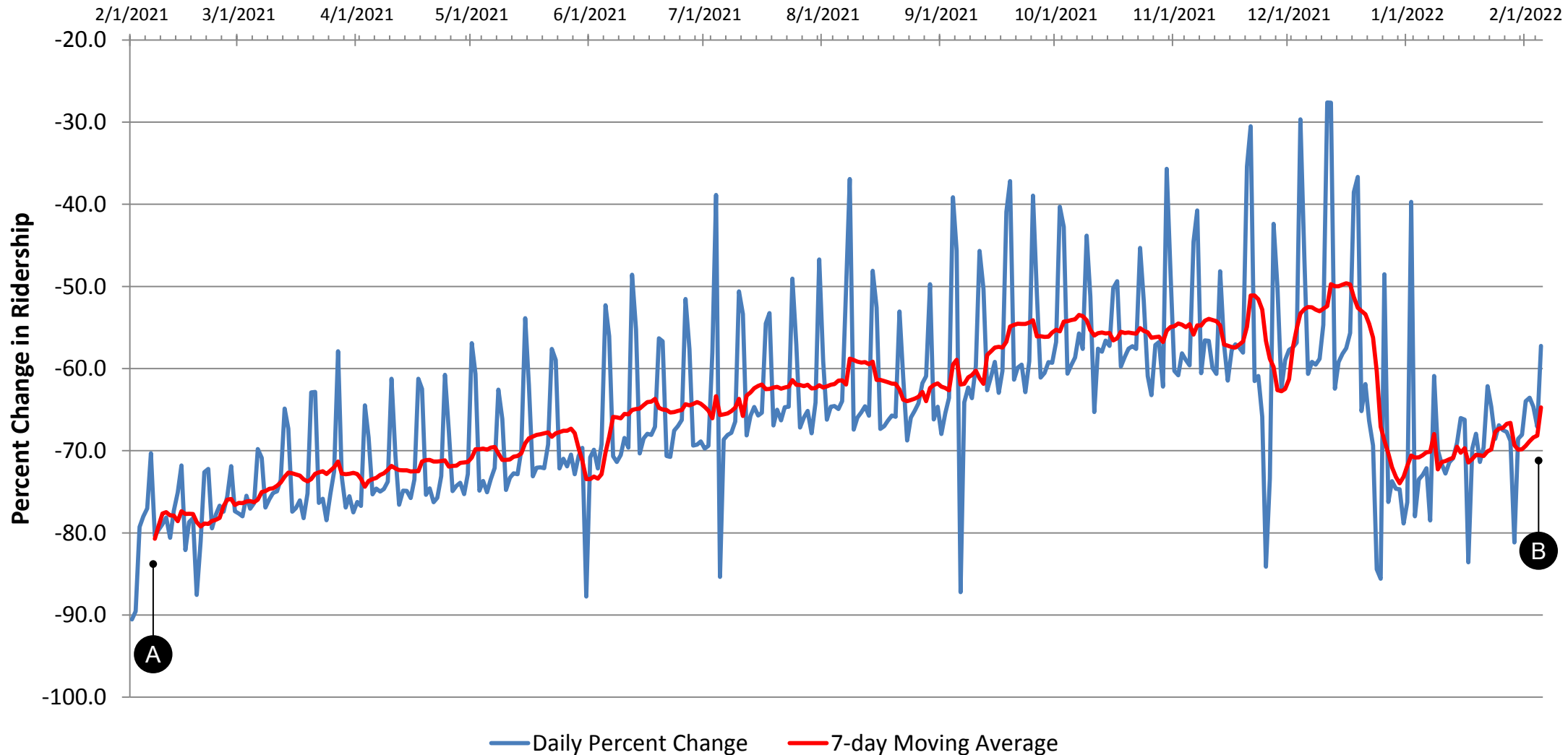


PATCO Percent Change in Ridership from February 2021 to Early February 2022

Percent Change in PATCO Ridership



A In early February 2021, ridership is about 80% below pre-COVID conditions.

B In early February 2022, ridership is about 65% below pre-COVID conditions.

Note 1: Percent change compared to pre-pandemic average by day of week from January 1st to March 7th 2020, excluding holidays.

Note 2: The daily percent change (in blue) shows the peaks and valleys for weekend and weekday ridership, respectively.

Note 3: 2021 holidays that may affect ridership include, President's Day (February 15th), Good Friday (April 2nd), Memorial Day (May 31st), Juneteenth (June 18th), Independence Day (Observed on July 5th), Labor Day (September 6th), Indigenous Peoples' Day (October 11th), and Thanksgiving (November 25th); and 2022 holidays that may affect ridership include, New Years Day (January 1st) and Martin Luther King Jr. Day (January 17th).