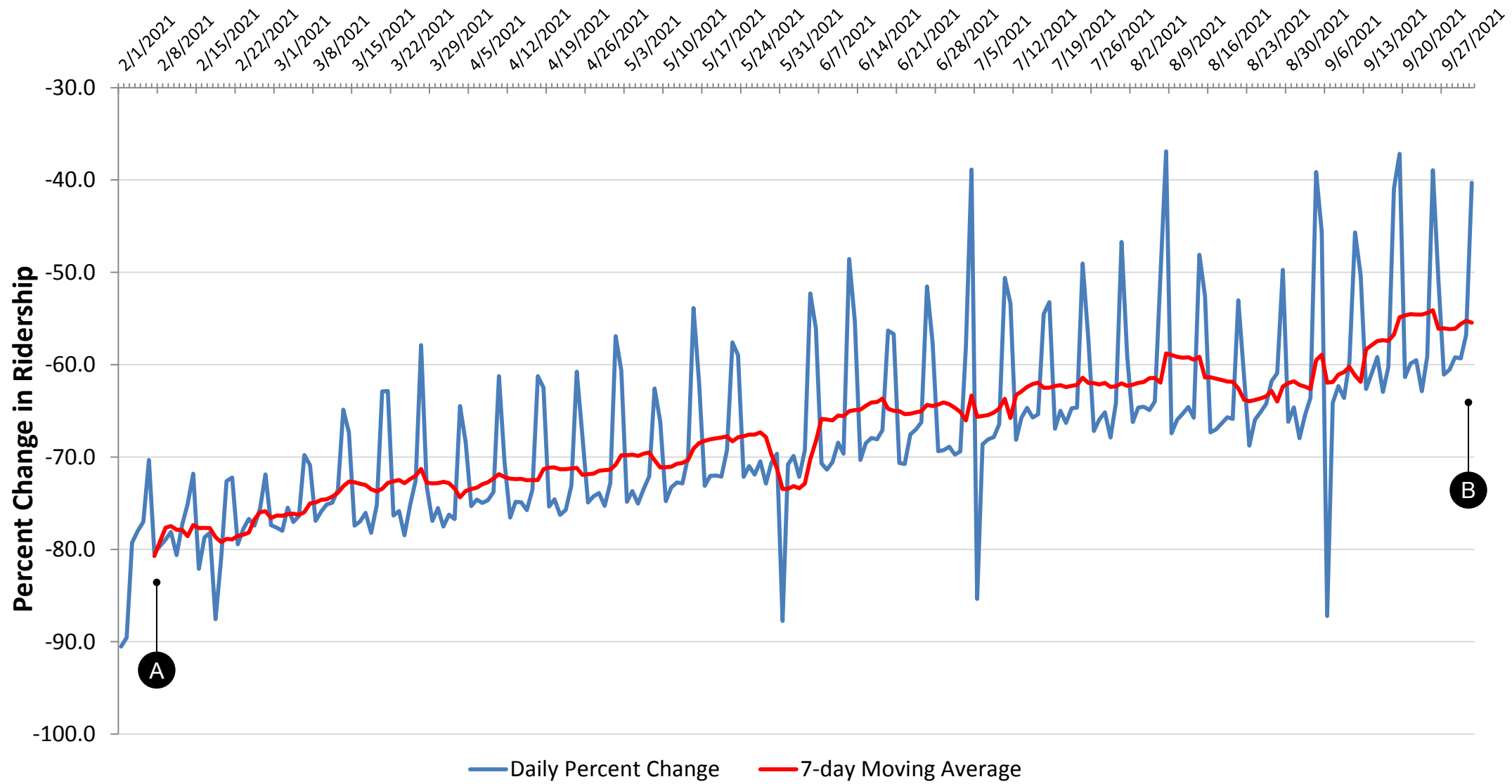


PATCO Percent Change in Ridership from February 2021 to October 2021

- A** In early February 2021, ridership about 80% below pre-COVID conditions.
- B** In early October 2021, ridership about 56% below pre-COVID conditions.



Note 1: Percent change compared to pre-pandemic average by day of week from January 1st to March 7th 2020, excluding holidays.
 Note 2: The daily percent change (in blue) shows the peaks and valleys for weekend and weekday ridership, respectively.
 Note 3: Holidays noted that may affect ridership include, President's Day (February 15th), Good Friday (April 2nd), Memorial Day (May 31st), Juneteenth (June 18th), Independence Day (Observed on July 5th), and Labor Day (September 6th).

Source: PATCO

