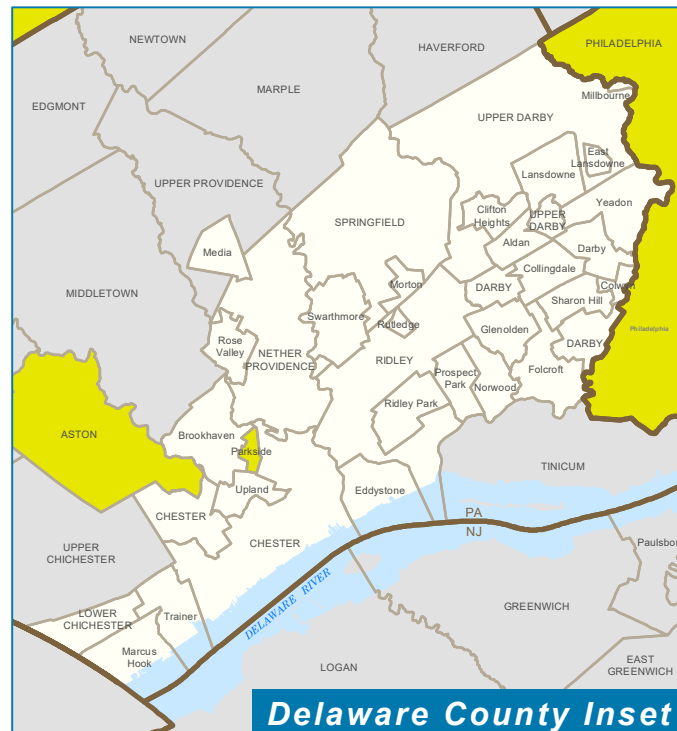
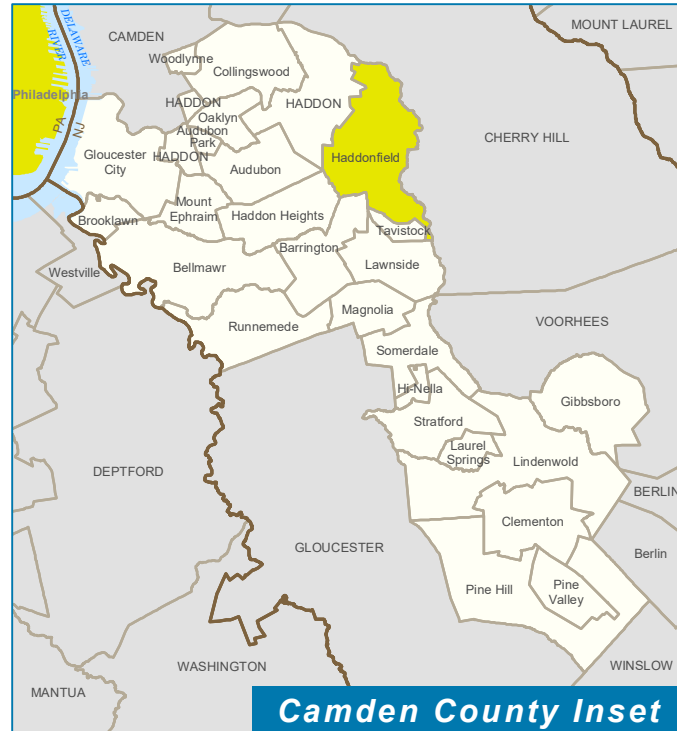


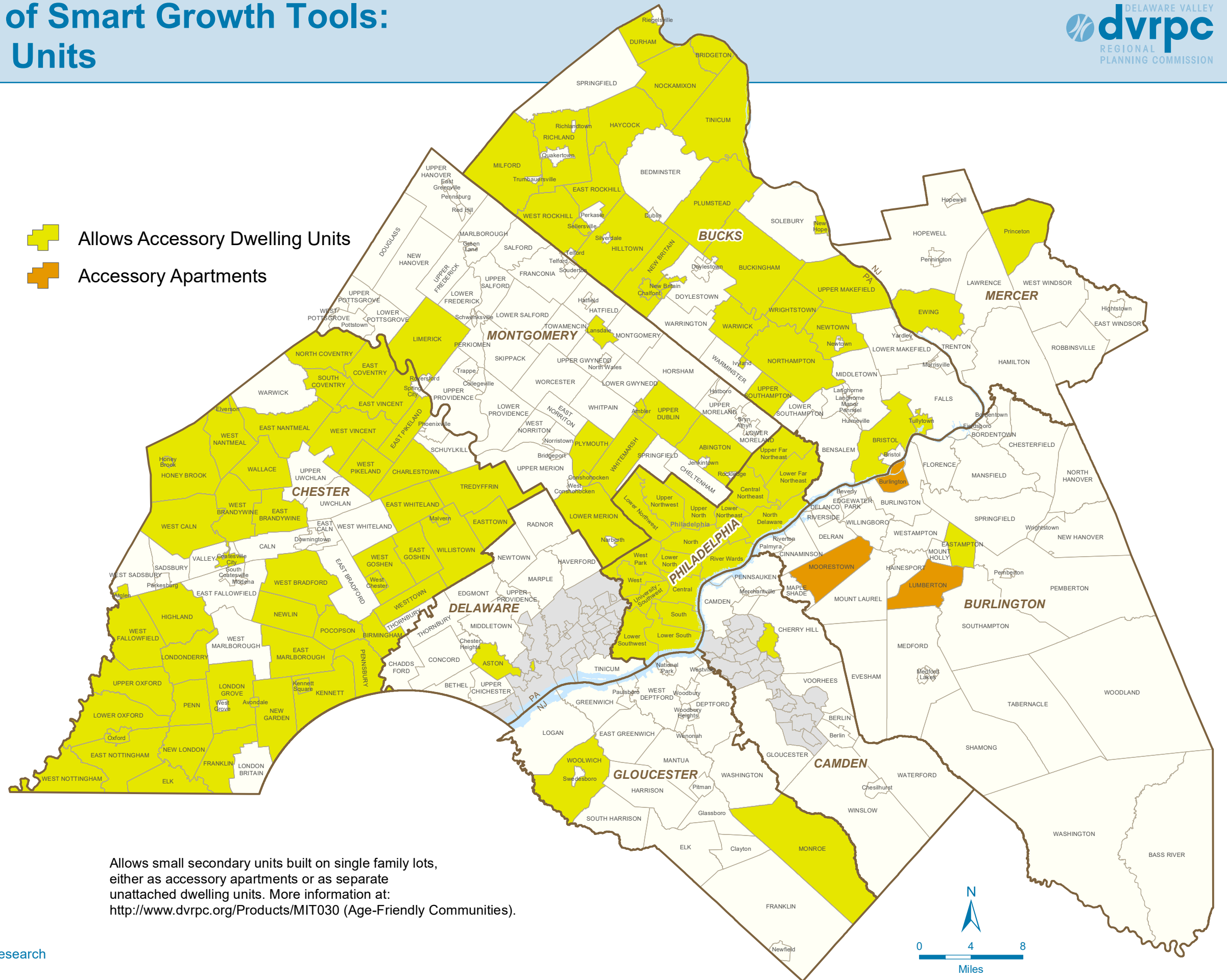


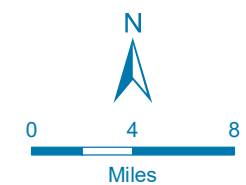
Municipal Adoption of Smart Growth Tools: Accessory Dwelling Units



-  Allows Accessory Dwelling Units
-  Accessory Apartments



Allows small secondary units built on single family lots, either as accessory apartments or as separate unattached dwelling units. More information at: <http://www.dvrpc.org/Products/MIT030> (Age-Friendly Communities).



Date: July 2020, updated from 2013
 Source: DVRPC 2013 Municipal Community Survey,
 2020 data from County Planning Commissions and web research

* Planning Districts are shown for City of Philadelphia